

THE HOUND

COACHING INN

Events Brochure

About

With a storied past serving the local community since 1872, this modern-day coaching inn is now the perfect stop for a pint, a meal, or a social gathering.

A diverse menu inspired by British pub classics sits alongside draught beers on tap, market cocktails and a carefully considered wine list.

The Hound houses several options for group bookings, private dining, canapé receptions, live sports and family style feasting.





Built within the walls of a Victorian police station,
The Hound stands as a new drinking and
dining destination for West London.

Event Spaces

The Front Room

20 - 40 Standing

The Private Dining Room

10 - 18 Seated

The Pub Floor

40 Seated

The Courtyard

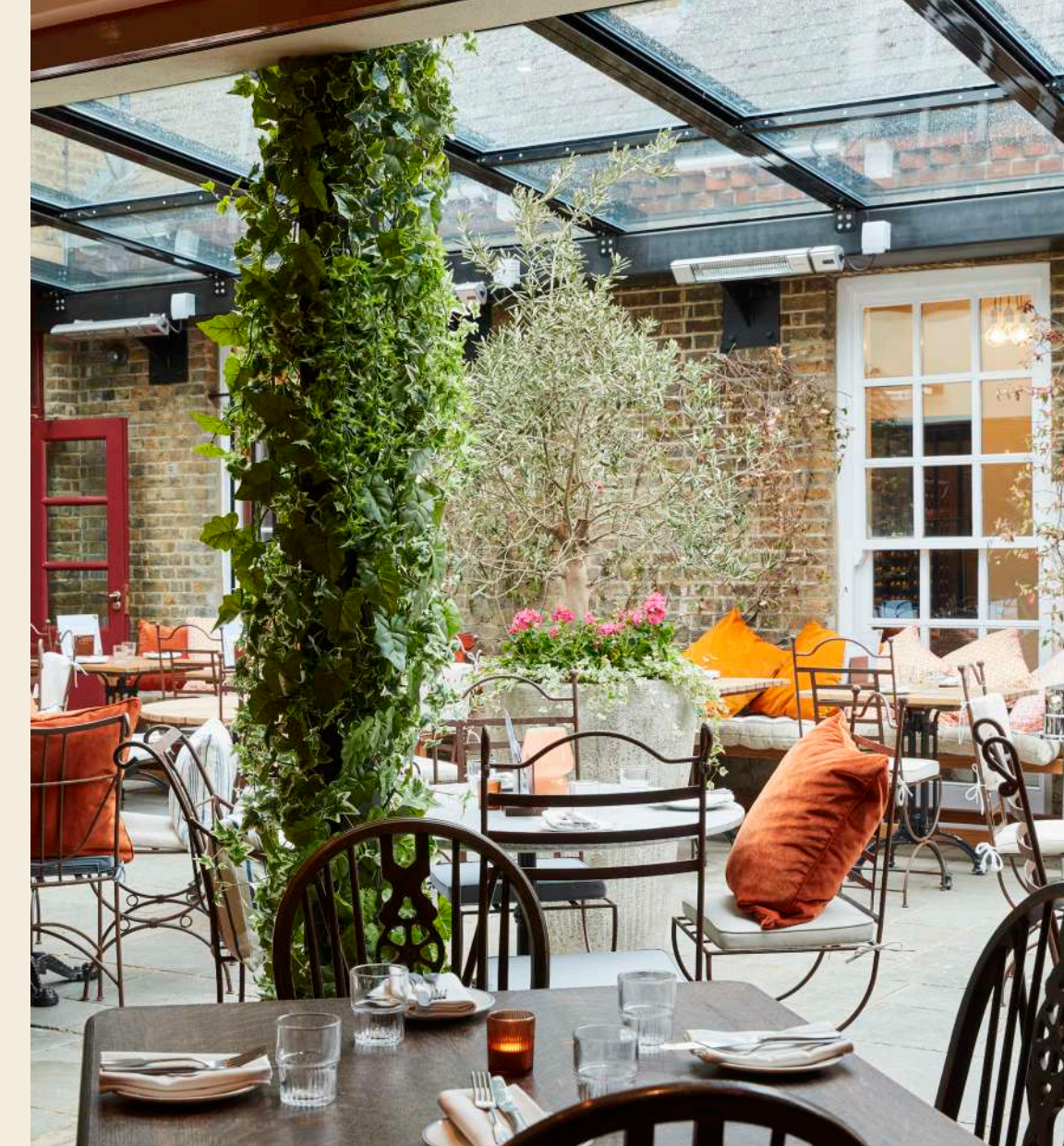
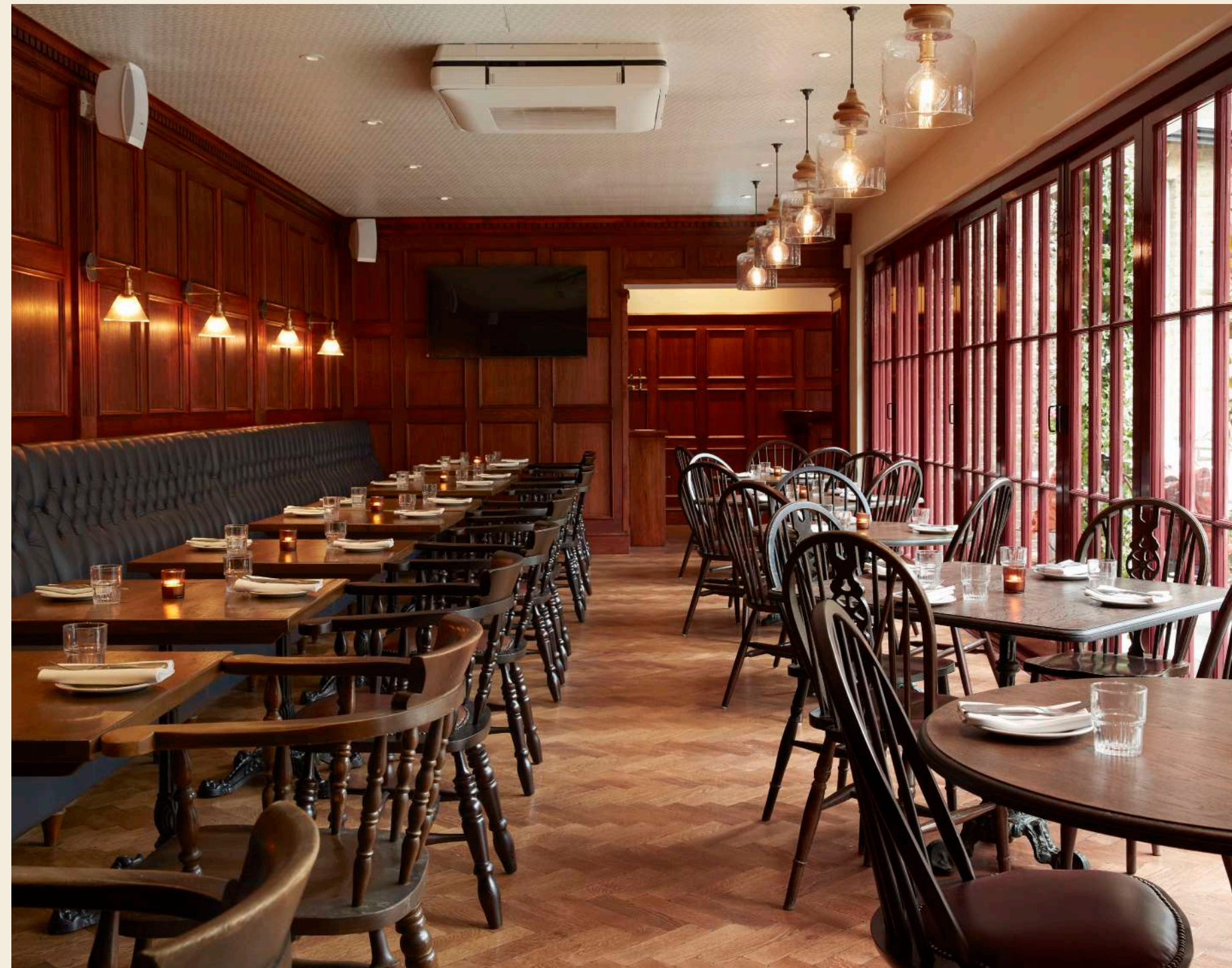
50 Seated / 60 Standing

The Green Room

22 Seated / 30 Standing

Full Venue Hire

100 Seated / 200 Standing



Features

The Front Room

Capacity

20 - 40 Standing

Features

Semi-private space, table service, private screen and WiFi throughout.

Private Dining Room

Capacity

10 - 18 Seated

Features

Private room, table service, private screen, AV system and WiFi throughout.

The Pub Floor

Capacity

40 Seated

Features

Semi-private space, table service, private screen, AV system and WiFi throughout. Bi-fold doors can open onto Courtyard.



Features

The Courtyard

Capacity

50 Seated / 60 Standing

Features

Semi-private outdoor space, covered with retractable glass roof, private screen, AV system, table service and WiFi throughout.

The Green Room

Capacity

22 Seated / 30 Standing

Features

Private room, table service, HD projector with screen, AV system and WiFi throughout. Doors can open onto Courtyard.

Full Venue Hire

Capacity

100 Seated / 200 Standing

Features

One private bar, five private spaces including one private covered courtyard, private bathrooms including accessible facilities, table service, a state of the art AV system, five TV screens and one HD projector with screen for presentations and the streaming of live sports, and WiFi throughout.





The Front Room



Private Dining Room



The Pub Floor



The Courtyard



The Green Room





THE CADOGAN ARMS

Located in the heart of Chelsea's bustling King's Road, the newly restored Cadogan Arms opened in 2021, with an ambitious renovation that pays homage to the public houses' two centuries spent serving the local community.

With capacity for up to 50 guests, The Cadogan Arms' private events space, The Rose Room, is equipped with a private horseshoe bar backed by a custom designed stained-glass wall, and two large meat ageing fridges which give extra tenderness and flavour to carefully sourced British beef.

Venue Features

WiFi Available | Music Options Available |
Hidden Art TVs With Sky Sports & Apple TV |
Private Bar

The Cadogan Arms is our sibling venue.
[Click here for event enquiries](#)

THE GEORGE

PUBLIC HOUSE

The George is an 18th century, Grade II listed pub on Great Portland Street, Fitzrovia. Across two floors, we offer a food and drink menu befitting of a modern London public house.

Culinary Director James Knappett has worked with Executive Chef John Sparks on a food menu that reflects the magical simplicity of pub fare, served alongside a range of signature dishes representative of a modern London pub.

Our signature perfect pints of Guinness, Irish Whiskey and Irish Coffees, are served alongside cask ales, craft beers, seasonal cocktails and an extensive wine list.

Exclusive Hire

150 Standing

Semi-Exclusive Hire

The Private Dining Room (20 seated / 25 standing)

The Dining Room (30 seated / 45 standing)

The Gluepot Bar (Up to 10 standing)

The First Floor (60 standing)

The Green Room (8 seated)

The Snug (10 seated / 25 standing)

The Ground Floor (70 standing)

The George is our sibling venue.
[Contact us for event enquiries.](#)



Contact

info@thehound.london

020 3872 5533

210 Chiswick High Road, Chiswick, London W4 1PD



Event Enquiries

[Click here to enquire now](#)



THE HOUND

COACHING INN